

MaxTalk 2

With the communications and service software MaxTalk 2 you can register and monitor your PV power plant in a jiffy. Free download at www.solarmax.com.



 **SWISS QUALITY**

Easy operation, enormous benefit

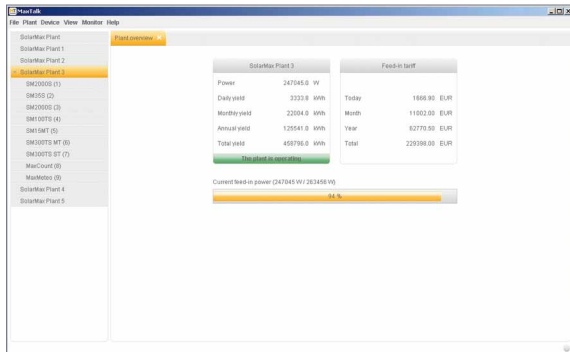


Fig. 1: Plant overview

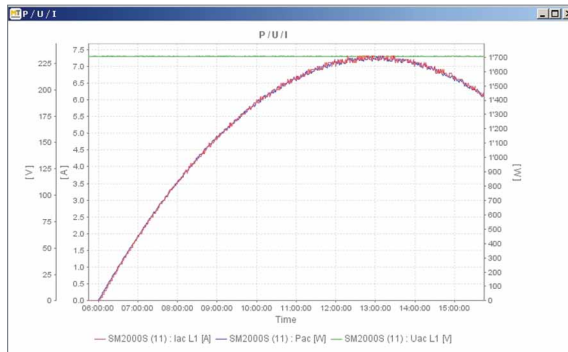


Fig. 2: Monitor

With just a few clicks you can install MaxTalk 2 on your PC. Connected to the inverter via Ethernet or RS485, the user-friendly program immediately displays all the important yield and measured values.

Intuitive user interface

- Intuitively understandable, easy to operate
- A plant tree allows you rapid access to all the registered plants and devices
- Simple interface with clearly labelled tabs
- Supported languages: German, English, French, Italian, Spanish

Plant functions

- Register and administer any number of PV plants
- The plant wizard supports you as you register your new plants
- The plant overview quickly establishes the current plant status

Device functions

- Query of present measurement values, yield data and device configuration

Monitor functions

- Any combination of important measured values of the PV power plant
- Measured values compiled in table or chart

Statistics functions

- Allow for representing daily, monthly, and annual yields in tables or bar graphs
- Several devices can be summarised in one graph which facilitates comparison of the devices

System Requirements

Windows XP

- Pentium-III with 800 MHz
- 512 MB RAM
- 100 MB available on hard-drive storage

Windows Vista and Windows 7

- Pentium-IV with 1 GHz or more
- 1 GB RAM
- 100 MB available on hard-drive storage

Required screen resolution

- 1024 x 768 pixel

Interfaces

- 10Base T Ethernet or RS-485 interface for the connection to the device

Devices supported

- String inverters of the C, S and MT series
- Central inverters of the C, TS and TS-SV series
- MaxConnect
- MaxCount
- MaxMeteo